



About us

VISION

Better illumination for all.

MISSION

Advance lighting technologies to make our life brighter.

CORE VALUES

Align with our customers Value and enrich our people
Be precise and practical Always forge ahead

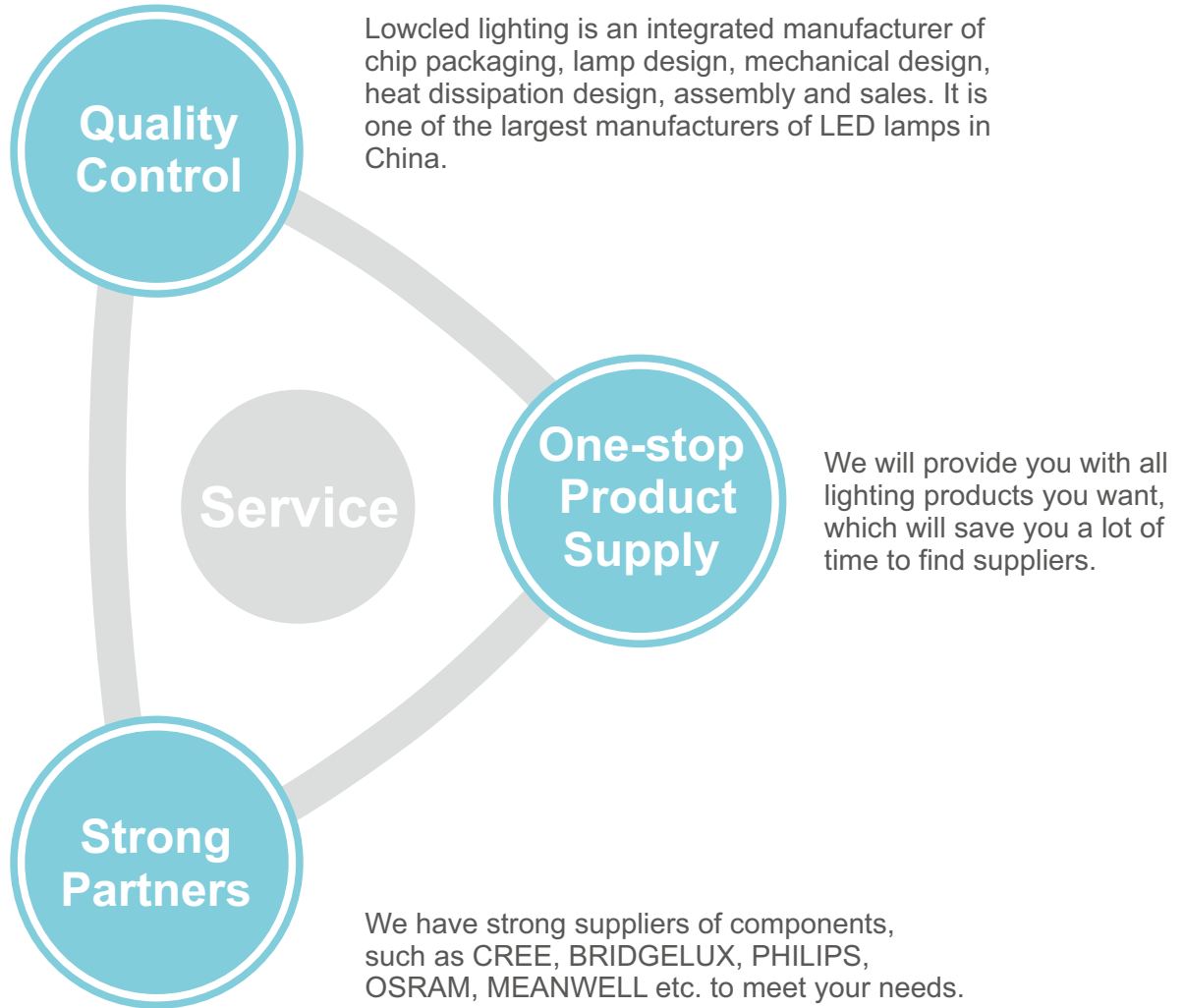
Lowcled Lighting Co., Ltd. is a high-tech enterprise which is specialized in developing, production and marketing of indoor and outdoor LED lighting products. We are established in 2004 based in Shenzhen, China. Our mission is to create a cleaner, greener, healthier environment by developing more energy efficient LED light fixtures. Through years of hard work and continuous innovation, we have won the excellent reputation as one of the high quality and trusted suppliers in China.

We provide a wide range of LED Light fixtures including LED flood light, LED stadium light, LED street light, LED high bay light, LED wall pack, LED canopy light, LED tri-proof light, LED tube, LED panel light, LED downlight, LED grow light, LED bulbs, LED strip light, LED track light, LED smart light etc. Our products have been highly approved by customers from Europe, North America, and Australia for its excellent quality, good service and endless innovation.

As a professional LED lighting manufacturer, our company, strictly sticking to "Customer first" business philosophy as well as taking environmental protection as our own commission, has launched many series of energy-saving, environment-friendly led lighting fixtures in the past few years. At the same time, we will be always like to continuously improve, innovate ourselves to meet up worldwide customers.



Advantages



Catalogue

LED Flood Light
4S Series
(P02)



35W



50W



70/100W



150W



200/240W



300W

LED Flood Light
4J Series
(P03)



100W



150W



200W

250W



300W



400W



500W

LED Flood Light
4A Series
(P04)



10W 20W 30W



50W 100W



150W 200W

LED Street Light
(Shoobox)
(P06)



60/80/100/120W



150/200W



250/300W

LED Street Light
4F Series
(P07)



50W



80W 100W



150W

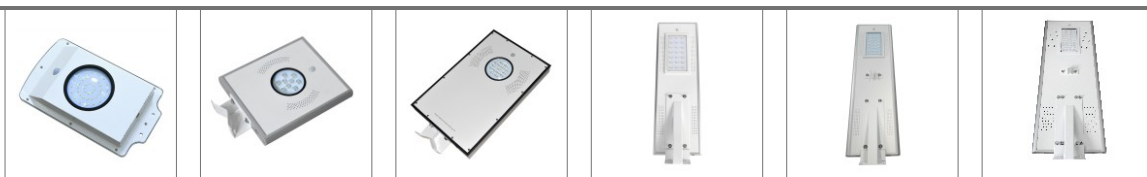


200W



250W

All In One Solar
LED Street Light
ASSL3 Series
(P08)



6W

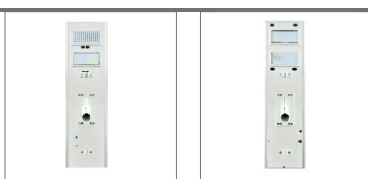
9/12W

15W

20W

30/40W

50/60/80W



100W

120W

All In One Solar
LED Street Light
ASSL4 Series
(P9)



10W

20W

30W

50W

80W

LED Street Light
Semi 1 Series
(P10)



30W

40W

50W

60W

LED Street Light
semi 2 Series
(P11)



20W

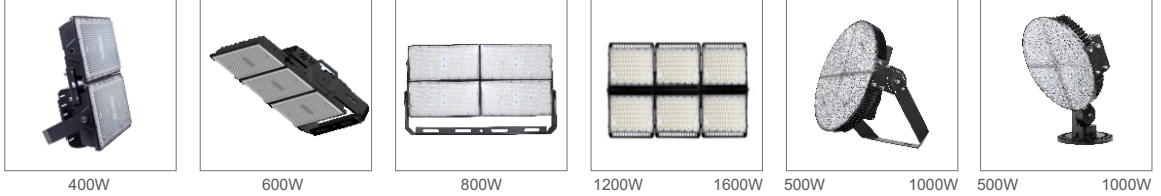
30W

40W

50W

60W

LED Stadium Light
(P13)



400W

600W

800W

1200W

1600W

500W

1000W

500W

1000W

LED High Bay Light
UFO1 Series
(P15)



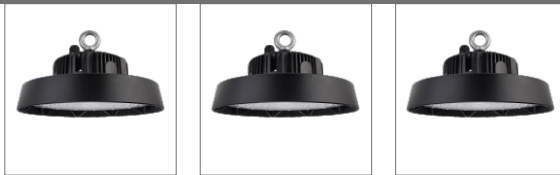
100W

150W

200W

240W

LED High Bay Light
UFO2 Series
(P16)



100W

150W

200W

LED Canopy Light
(P18)



80W

100W

120W

LED Wall Light
(P20)



45W

60W

80W

100W

120W

150W

LED Track Light
(P22 - P23)



20W 25W 30W 20W 25W 30W 25W 30W 35W 20W 30W

LED Strip Light
(P25-P27)



LED Neon Strip Light Mixed Color Strip light Digital RGB Series SMD2216 Series SMD3014 Series

LED Panel Light
(P29 - P31)



295X295 595X595 295X1195 595X1195 R90/120/145/170/195/225/300 S90/120/145/170/195/225/300 R120/170/225/300 S120/170/225/300

LED Smart Light
(P33 - P34)

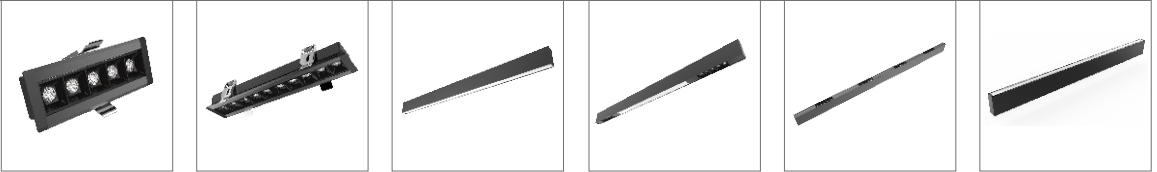


Φ60 5W/7W/9W Φ63 9W Φ50 5W/7W Φ37 4.5W



Φ100 Φ160 Φ100 295*295 595*595 295*595 295*1195 7/12W 6/12/18W 6/12/18W

LED Down Light
(P36 - P37)



2 Spots to 5 Spots

10 Spots or 15 Spots

Linear Lighting

Linear Lighting and Spots

Spot Linear Lighting

up and down Lighting

LED Bulb Light
(P39 - P40)



G45(E14)

G45(E27)

G60, G70

G120

LED Tube Light
(P42 - P44)



T5 without Bracket

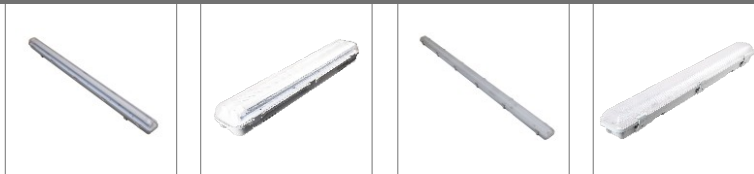
T5 with Bracket

T8 without Bracket

T8 with Bracket

Glass tube light

LED Tri-proof Light
(P46)



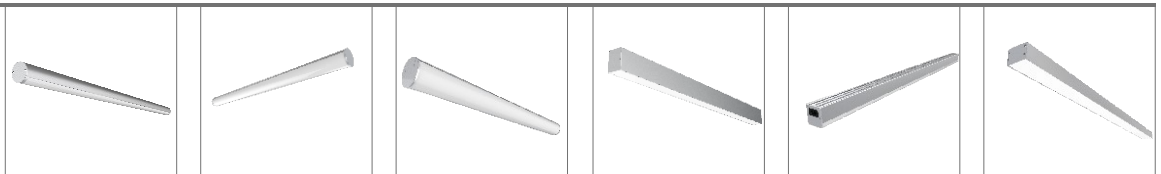
Single tube transparent cover

Double tube transparent cover

Single line SMD frosted cover

Double line SMD frosted cover

LED Linear Light
(P48-P50)



LL-L4040

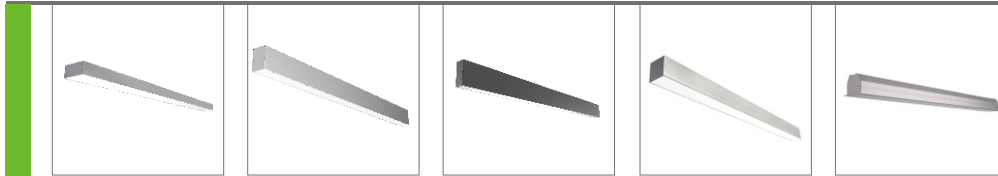
LL-L6060

LL-L8080

LL-L5656

LL-L4245

LL-L5035



LL-L7535

LL-L5070

LL-L3583

LL-L7578

LL-L7562

LED Grow Light
(P52)



60W

120W

180W

240W

300W

LED FLOOD LIGHT

www.lowcled.com

Application Places

Walls, boards, advertisement boards,
gardens, hotels, rooms, clubs, square etc

LED Flood Light

www.lowcled.com

Features:

- Model: LL-FLX-100W-4S-01-130/LL-FLX-100W-4S-01-150
- Power(±10%): 100W
- Input(Frequency): AC 100-277V 50/60Hz
- Lumen: 13000lm/15000lm
- Efficacy: 130lm/w or 150lm/w
- PF: >0.9
- LED Type: SMD2835
- CCT(K): 3000K / 4000K / 6000K
- CIR(Ra): ≥70
- Beam angle: 120°
- Working Temperature: -40°C-45°C
- Humidity of Working Condition: 20%-90%
- IP Grade: IP65
- Body Materials: Aluminum+Glass
- Product Dimension(L*W*H): 280*252*75mm
- Net Weight: 2.4 kg
- Life span of Light Source: 50000 H
- Warranty: 5 years



Model NO.	Power	Input voltage	Lumen	Color	LED	Beam angle
LL-FLX-35W-4S	35W	100-277V AC / 10-30V DC	130LM/W	2700-6500K	SMD2835	120
LL-FLX-50W-4S	50W	100-277V AC / 10-30V DC	130LM/W	2700-6500K	SMD2835	120
LL-FLX-70W-4S	70W	100-277V AC	130LM/W	2700-6500K	SMD2835	120
LL-FLX-100W-4S	100W	100-277V AC	130/150LM/W	2700-6500K	SMD2835	120
LL-FLX-150W-4S	150W	100-277V AC	130/150LM/W	2700-6500K	SMD2835	120
LL-FLX-200W-4S	200W	100-277V AC	130/150LM/W	2700-6500K	SMD2835	120
LL-FLX-240W-4S	240W	100-277V AC	130/150LM/W	2700-6500K	SMD2835	120
LL-FLX-300W-4S	300W	100-277V AC	130/150LM/W	2700-6500K	SMD2835	120

Features:

- Model: LL-FL-200W-4J
- Power: 200W
- Chipset: Philips
- Input Voltage: 100-240VAC 50/60Hz
- Driver: Meanwell
- Power Factor: ≥ 0.9
- Material: AL1060 +PC
- Housing Color: black
- Collision Protection Level: IK08
- Color Temperature: 3000-6500K
- Luminous Flux: 26000lm
- Luminous Efficacy: 130 lm/w
- CRI: >70
- Beam Angle: 30°/ 60°/ 90°
- IP Level: IP65
- Operating Temperature: -30°C~50°C
- Lifespan: 50,000h
- Warranty: 5years



400W



500W



100W



150W



200W



250W



300W

Model NO.	Power	LED	Input voltage	Lumen	Ra	Beam angle
LL-FL-100W-4J	100W	Philips SMD3030	AC100-240V	130LM/W	80	30°/60°/90°
LL-FL-150W-4J	150W	Philips SMD3030	AC100-240V	130LM/W	80	30°/60°/90°
LL-FL-200W-4J	200W	Philips SMD3030	AC100-240V	130LM/W	80	30°/60°/90°
LL-FL-250W-4J	250W	Philips SMD3030	AC100-240V	130LM/W	80	30°/60°/90°
LL-FL-300W-4J	300W	Philips SMD3030	AC100-240V	130LM/W	80	30°/60°/90°
LL-FL-400W-4J	400W	Philips SMD3030	AC100-240V	130LM/W	80	30°/60°/90°
LL-FL-500W-4J	500W	Philips SMD3030	AC100-240V	130LM/W	80	30°/60°/90°

LED Flood Light

www.lowcled.com

Features:

- Model:LL-FLX-100W-4A
- Power:100W
- Input(Frequency):AC110-130V / AC200-240V (50/60Hz)
- Lumen:9000lm
- Efficacy:90lm/w
- PF:>0.9
- LED Type:SMD2835
- CCT(K):3000K / 4000K / 6000K
- CIR(Ra):≥80
- Beam angle:120°
- Collision protection level:IK08
- Life span of Light Source:≧ 30000 H
- IP Grade:IP65
- Body Materials:Aluminum+Glass
- Product Dimension(L*W*H):318*280*53mm
- Net Weight:1800g
- Carton Size:323*60*252mm
- Q'ty/Carton:6 pcs



Model NO.	Power	Input voltage	LED	Luminosity	Ra	PF	Beam angle
LL-FLX-10W-4A	10W	AC110-130V / AC200-240V	SMD2835	90LM/W±5%	80	>0.9	120°
LL-FLX-20W-4A	20W	AC110-130V / AC200-240V	SMD2835	90LM/W±5%	80	>0.9	120°
LL-FLX-30W-4A	30W	AC110-130V / AC200-240V	SMD2835	90LM/W±5%	80	>0.9	120°
LL-FLX-50W-4A	50W	AC110-130V / AC200-240V	SMD2835	90LM/W±5%	80	>0.9	120°
LL-FLX-100W-4A	100W	AC110-130V / AC200-240V	SMD2835	90LM/W±5%	80	>0.9	120°
LL-FLX-150W-4A	150W	AC110-130V / AC200-240V	SMD2835	90LM/W±5%	80	>0.9	120°
LL-FLX-200W-4A	200W	AC110-130V / AC200-240V	SMD2835	90LM/W±5%	80	>0.9	120°

LED STREET LIGHT

www.lowcled.com



Application Places

Main Road, Sidewalk, Square, School, Park, Garden, Factory, Residential Places, Villa and many other projector lighting places.

LED Street Light (Shoebox Light)

www.lowcled.com

Features:

- Model: LL-SL-200W-4S
- Power: 200W
- Input Voltage: 100-277VAC
- Frequency: 50/60Hz
- Output Current: 1.45*2A
- Power Factor: ≥ 0.9
- Total Harmonic Distortion: $< 20\%$
- Color Temperature: 3000-6500K
- Luminous Flux: 26000lm
- Luminous Efficacy: 130 lm/w
- CRI: > 70
- Raw material: Aluminium + PC
- Beam Angle: $80^{\circ} \times 150^{\circ}$
- Light Transmittance: 0.92
- IP Level: IP65
- Operating Temperature: $-40 \sim 40^{\circ}\text{C}$
- Storage Temperature: $-40 \sim 90^{\circ}\text{C}$
- Lifespan: 50,000h
- Dimension: 438*310*72mm
- Net Weight: 4.3 kg
- Gross Weight: 5.86 kg
- Carton Size: 655*355*120mm



60/80/100/120W



150/200W



250/300W

Model NO.	Power	LED	Input voltage	Lumen	IP	Beam angle
LL-SL-60W-4S	60W	SMD2835	100-277V AC	7800lm	Ip65	80*150°
LL-SL-80W-4S	80W	SMD2835	100-277V AC	7800lm	Ip65	80*150°
LL-SL-100W-4S	100W	SMD2835	100-277V AC	7800lm	Ip65	80*150°
LL-SL-120W-4S	120W	SMD2835	100-277V AC	7800lm	Ip65	80*150°
LL-SL-150W-4S	150W	SMD2835	100-277V AC	7800lm	Ip65	80*150°
LL-SL-200W-4S	200W	SMD2835	100-277V AC	7800lm	Ip65	80*150°
LL-SL-250W-4S	250W	SMD2835	100-277V AC	7800lm	Ip65	80*150°
LL-SL-300W-4S	300W	SMD2835	100-277V AC	7800lm	Ip65	80*150°

Features:

- Model:LL-SL4F-200W
- Power:200W
- Input Voltage:100-240VAC
- Frequency:50/60Hz
- Power Factor:≥0.9
- Total Harmonic Distortion:<20%
- Color Temperature:3000-6500K
- Luminous Flux:22000lm
- Luminous Efficacy:110 lm/w
- CRI:>70
- Raw material:Die-cast Aluminium + PC
- Beam Angle:60° / 90° / 80*150° / 80*140°偏 30° / 80*150°偏 60°
- Light Transmittance:0.92
- IP Level:IP65
- Operating Temperature:-40~50°C
- Storage Temperature:-40~75°C
- Storage Humidity:20% ~ 95%
- Housing Color:Black/Gray
- Product Dimension:684*320*110mm
- Net Weight:6.9 kg
- Gross Weight:8.8 kg
- Carton Size:741*385*155mm/1PCS
- Lifespan:50,000h



LL-SL4F-50W



LL-SL4F-80W / 100W



LL-SL4F-150W



LL-SL4F-200W



LL-SL4F-250W

Model NO.	Power	Chipset	Input voltage	Luminosity	Color	IP	Beam angle
LL-SL4F-50W	50W	Philips 3030	AC100-240V	110lm/w±5%	2700-6500K	Ip65	60° / 90° / 80*140°/150°
LL-SL4F-80W	80W	Philips 3030	AC100-240V	110lm/w±5%	2700-6500K	Ip65	60° / 90° / 80*140°/150°
LL-SL4F-100W	100W	Philips 3030	AC100-240V	110lm/w±5%	2700-6500K	Ip65	60° / 90° / 80*140°/150°
LL-SL4F-150W	150W	Philips 3030	AC100-240V	110lm/w±5%	2700-6500K	Ip65	60° / 90° / 80*140°/150°
LL-SL4F-200W	200W	Philips 3030	AC100-240V	110lm/w±5%	2700-6500K	Ip65	60° / 90° / 80*140°/150°
LL-SL4F-250W	250W	Philips 3030	AC100-240V	110lm/w±5%	2700-6500K	Ip65	60° / 90° / 80*140°/150°

LED Street Light

www.lowcled.com



Features:

·Model NO. : LL-ASSL3-100W

LED

- Chipset: SMD3535
- Chipset Q'ty : 102 PCS
- Light Efficiency : 130-150LM/W±10LM
- Lumen: 7800-9000LM
- Color Temperature: 3000K-6500K
- CRI: >70
- LED Lifespan: 50000H

Electrical characteristic:

- Rated Power: 100W
- Solar Panel Power: 18V/120W
- Lithium Battery: 12V 84 AH
- Charge Time: 6 hours with summer's sunshine
- Discharging Time: > 36H
- Working Temperature : -25°C~+65°C
- Switch Threshold: 15LUX
- Max sensing Distance: ≤ 12M

Mechanical Specification:

- Light body size: 1570*450*45mm
- Net Weight: 21 kg
- Mounting Height: 10-11 M
- Pole Installation Distance: 40-45 M

Packing Information:

- Q'ty/carton: 1 set / carton
- Carton Size: 1645*525*120mm
- Gross Weight: 25 kg



Model NO.	Power	Chipset	Solar Panel	Lumen	IP	CCT
LL-ASSL3-6W	6W	SMD3528	12V/10W	600-650LM	Ip65	3000K-6500K
LL-ASSL3-9/12W	9/12W	Bridgelux 45mil	18V/15/20W	900-950LM/1200-1300LM	Ip65	3000K-6500K
LL-ASSL3-18/20W	18/20W	SMD3030	18V/35/50W	1950-2700LM/2000-3000LM	Ip65	3000K-6500K
LL-ASSL3-30W	30W	SMD3030	18V/65W	3900-4500LM	Ip65	3000K-6500K
LL-ASSL3-40/50W	40/50W	SMD3535	18V/70/80W	5200-6000LM/13000-15000LM	Ip65	3000K-6500K
LL-ASSL3-60/80W	60/80W	SMD3535	18V/80/90W	6500-7500LM/7800-9000LM	Ip65	3000K-6500K
LL-ASSL3-100W	100W	SMD3535	18V/120W	7800-9000LM	Ip65	3000K-6500K
LL-ASSL3-120W	120W	SMD3535	18V/130W	15600-18000LM	Ip65	3000K-6500K



Features:

·Model NO. :LL-ASL4-30W

LED:

- Chipset :3030 LED
- Chipset Q'ty :90PCS
- Light Efficiency :110-120LM/W±10LM
- Lumen :3000-4000LM
- Color Temperature :3000K-6500K
- CRI:>70
- LED Lifespan:50000H

Electrical characteristic:

- Rated Power:30W
- Solar Panel Power:18V/40W
- Lithium Battery:12V 213.1WH
- Charge Time:6-8H
- Discharging Time:> 36H
- Working Temperature :-30℃~+60℃
- Switch Threshold:15LUX
- Max sensing Distance: ≤ 12M

Mechanical Specification:

- Light body size:1170*225*50mm
- Net Weight:10.1 kg
- Mounting Height:4-6 M
- Pole Installation Distance:10-15 M

Packing Information:

- Q'ty/carton:1 set / carton
- Carton Size:1295*300*115mm
- Gross Weight:15.5 kg



10W



20W



30W



50W



80W

Model NO.	Power	Chipset	CRI	Lumen	IP	Mounting Height	Product Size
LL-ASL4-10W	10W	Epistar LED 3030	>70	1000~1500LM	Ip65	3-4M	430*225*50mm
LL-ASL4-20W	20W	Epistar LED 3030	>70	2000~3000LM	Ip65	4-5M	790*225*50mm
LL-ASL4-30W	30W	Epistar LED 3030	>70	1000~1500LM	Ip65	4-5M	1167*225*50mm
LL-ASL4-50W	50W	Epistar LED 3030	>70	1000~1500LM	Ip65	7-8M	1550*225*50mm
LL-ASL4-80W	80W	Epistar LED 3030	>70	1000~1500LM	Ip65	8-10M	1930*225*50mm

LED Street Light

www.lowcled.com

Features:

·Model NO. : LL-SMSL1-30W

LED:

- Chipset : 3535 LED
- Chipset Q'ty : 42PCS
- Light Efficiency : 130LM/W±10LM
- Lumen : 3500-4500LM
- Color Temperature : 3000K-6500K
- CRI: >70
- LED Lifespan: 50000H

Electrical characteristic:

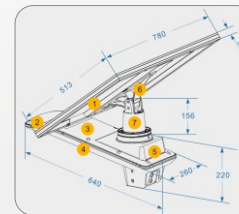
- Rated Power: 30W
- Solar Panel Power: 18V/60W/mono156
- Lithium Battery: 12V 264WH
- Charge Time: 6-8H
- Discharging Time: > 36H
- Working Temperature : -30℃~+60℃
- Switch Threshold: 15LUX
- Max sensing Distance: ≤ 12M

Mechanical Specification:

- Light body size: 640*260*250mm
- Solar Panel Size: 780*513*30mm
- Net Weight: 15 kg
- Mounting Height: 4-6 M
- Pole Installation Distance: 10-15 M

Packing Information:

- Q'ty/carton: 1 set / 2 cartons
- Carton Size(Lamp): 690*330*320mm
- Carton Size(Solar panel): 825*565*75mm
- Gross Weight: 17.8 kg



Model NO.	Power	Chipset	Lumen	CRI	IP	Mounting Height
LL-SMSL1-30W	30W	SMD3535	3500-4500LM	>70	Ip66	4-6M
LL-SMSL1-40W	40W	SMD3535	4500-5500LM	>70	Ip66	5-7M
LL-SMSL1-50W	50W	SMD3535	5500-6500LM	>70	Ip66	6-8M
LL-SMSL1-60W	60W	SMD3535	6500-7500LM	>70	Ip66	7-9M

Features:

·Model NO. : LL-SMSL2-30W

LED:

- Chipset : 3030 LED
- Chipset Q'ty : 30PCS
- Light Efficiency : 130LM/W±10LM
- Lumen : 3000-4000LM
- Color Temperature : 3000K-6500K
- CRI: >70
- LED Lifespan: 50000H

Electrical characteristic:

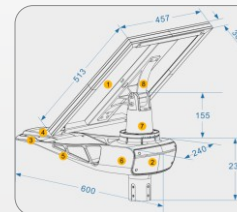
- Rated Power: 30W
- Solar Panel Power: 18V/50W
- Lithium Battery: 12V 213.1WH
- Charge Time: 6-8H
- Discharging Time: > 36H
- Working Temperature : -30℃~+60℃
- Switch Threshold: 15LUX
- Max sensing Distance: ≤ 12M

Mechanical Specification:

- Light body size: 600*240*230mm
- Solar Panel Size: 625*513*30mm
- Net Weight: 14.7 kg
- Mounting Height: 4-6 M
- Pole Installation Distance: 15-20 M

Packing Information:

- Q'ty/carton: 1 set / 2 cartons
- Carton Size(Lamp): 690*330*320mm
- Carton Size(Solar panel): 670*565*75mm
- Gross Weight: 17.4 kg



Model NO.	Power	Chipset	Lumen	CRI	IP	Mounting Height
LL-SMSL2-20W	20W	SMD3030	2000-3000LM	>70	Ip66	4-5M
LL-SMSL2-30W	30W	SMD3030	3000-4000LM	>70	Ip66	4-6M
LL-SMSL2-40W	40W	SMD3030	4000-5000LM	>70	Ip66	4-6M
LL-SMSL2-50W	50W	SMD3535	5000-6000LM	>70	Ip66	5-7M
LL-SMSL2-60W	60W	SMD3535	6000-7000LM	>70	Ip66	5-7M

LED STADIUM LIGHT

www.lowcled.com



Application Places

School, Hospital, Conference, Meeting room, Factories, Super-markets, Airport, Subway, Elevated overpass, Stadium, etc.

Features:

- Power: 1000W
- Model: LL-PX1000
- Input Voltage: 100-277VAC
- Input Current: 4.85*4
- Frequency: 50/60Hz
- Power Factor: ≥0.9
- Total Harmonic Distortion: <20%
- Color Temperature: 3000-6500K
- Luminous Flux: 150000lm
- Luminous Efficacy: 150 lm/w
- CRI: >70
- Beam Angle: 25°
- LED Quantity: 480
- Light Transmittance: 0.92
- IP Level: IP65
- Operating Temperature: -40~40°C
- Preservation Temperature: -40~90°C
- Lifespan: 50,000h
- Warranty: 5years
- Net Weight: 32.2 kg
- Gross Weight: 34.3 kg
- Carton Size: 855*675*260mm



LL-PX500



LL-PB1000



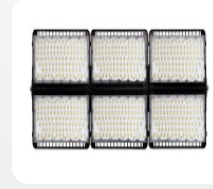
LL-PF400



LL-PF600



LL-PF800



LL-PF1200



LL-PF1600

Model NO.	Power	Chipset	Input voltage	Lumen	Beam angle	Ra	Driver
LL-PF400	400W	Philips SMD3030	90-305V AC	60000lm	15°/30°/60°	70	MEANWELL/ SONSEN
LL-PF600	600W	Philips SMD3030	90-305V AC	90000lm	15°/30°/60°	70	MEANWELL/ SONSEN
LL-PF800	800W	Philips SMD3030	90-305V AC	120000lm	15°/30°/60°	70	MEANWELL/ SONSEN
LL-PF1200	1200W	Philips SMD3030	90-305V AC	180000lm	15°/30°/60°	70	MEANWELL/ SONSEN
LL-PF1600	1600W	Philips SMD3030	90-305V AC	240000lm	15°/30°/60°	70	MEANWELL/ SONSEN
LL-PX500	500W	Philips SMD3030	90-305V AC	75000lm	15°/30°/60°	70	MEANWELL/ SONSEN
LL-PX1000	1000W	Philips SMD3030	90-305V AC	150000lm	15°/30°/60°	70	MEANWELL/ SONSEN
LL-PB500	500W	Philips SMD3030	90-305V AC	75000lm	15°/30°/60°	70	MEANWELL/ SONSEN
LL-PB1000	1000W	Philips SMD3030	90-305V AC	150000lm	15°/30°/60°	70	MEANWELL/ SONSEN

LED HIGH BAY LIGHT

www.lowcled.com



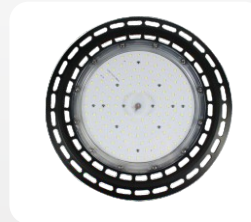
Application Places

workshop, storeroom, toll station, gas station, supermarket, exhibition room, burton coliseum and so on.



Features:

- Model: LL-UFO100-X130/LL-UFO100-X150
- Power: 100W
- Luminous Flux: 13000lm/15000lm
- Luminous Efficacy: 130 lm/w, 150 lm/w
- Input Voltage: 100-277VAC
- Input Current: 1.45A
- Frequency: 50/60Hz
- Power Factor: ≥ 0.9
- Total Harmonic Distortion: $< 20\%$
- Color Temperature: 3000-6500K
- CRI: > 70
- Beam Angle: 120°
- LED: SMD2835
- LED Quantity: 210 PCS
- Light Transmittance: 0.92
- IP Level: IP65
- Operating Temperature: $-40\sim 40^\circ\text{C}$
- Lifespan: 50,000h
- Warranty: 5years
- Dimension(D*H): $\Phi 280*132\text{mm}$
- Net Weight: 2 kg
- Gross Weight: 2.3 kg
- Q'ty/Carton: 1 pcs
- Carton Size: $330*330*17\text{mm}$



Model NO.	Power	Input voltage	Lumen	Ra	Beam angle	Dimension
LL-UFO100-X130/X150	100W	100-277V AC	13000-15000lm	> 70	120°	$\Phi 33*17\text{CM}$
LL-UFO150-X130/X150	150W	100-277V AC	19500-22500lm	> 70	120°	$\Phi 40*17\text{CM}$
LL-UFO200-X130/X150	200W	100-277V AC	26000-30000lm	> 70	120°	$\Phi 44.5*18\text{CM}$
LL-UFO240-X130/X150	240W	100-277V AC	31200-36000lm	> 70	120°	$\Phi 44.5*20\text{CM}$

UFO LED High Bay Light

www.lowcled.com

Features:

- Model:LL-UFO100-H03
- Power:100W
- Luminous Flux:18000lm
- Luminous Efficacy:180 lm/w
- Input Voltage:100-240VAC
- Frequency:50/60Hz
- Power Factor:≥0.95
- Total Harmonic Distortion:<20%
- Color Temperature:3000/4000/5700/6500K
- CRI:>70
- Beam Angle:60°/90°/120°
- LED:PHILIPS / SAN'AN
- IP Level:IP65
- Raw Material:ADC12/PC
- Lifespan:50,000h
- Dimension(D*H):Φ230*170mm
- Weight:2.5 kg
- Q'ty/Carton:1 pcs
- Carton Size:265*265*170mm



Model NO.	Power	Input voltage	Efficiency	CRI	LED	Driver	Beam angle
LL-UFO100/150/200-H01	100/150/200W	AC100-240V	130lm/W	80	Philips 3030	MEANWELL	60°/90°/120°
LL-UFO100/150/200-H02	100/150/200W	AC100-240V	130lm/W	80	San an(140/210/280PCS)	Domestic Driver	60°/90°/120°
LL-UFO100/150/200-H03	100/150/200W	AC100-240V	180lm/W	80	San an(340/520/720PCS)	Domestic Driver	60°/90°/120°

LED CANOPY LIGHT

www.lowcled.com



Application Places

Hotel canopies, parking canopies, gas stations, soffit areas, bank canopy drive-thrus covered walkways, carports etc.

LED Canopy Light

www.lowcled.com

Features:

- Model: LL-WP-100W
- Power: 100W
- Input Voltage: 100-277VAC
- Frequency: 50/60Hz
- Power Factor: ≥ 0.9
- Material: Die-cast aluminum + PC
- Chipset: SMD2835
- Housing Color: brown
- Color Temperature: 3000-6500K
- Luminous Flux: 15000lm
- Luminous Efficacy: 150 lm/w
- CRI: >70
- Beam Angle: 150°
- IP Level: IP65
- Operating Temperature: -40~40°C
- Storage Temperature: -40~90°C
- Lifespan: 50,000H
- Warranty: 5years



Model NO.	Input voltage	Power	Chip	Lumen	IP	Color	Beam Angle
LL-CL-80W	AC 100-277V	80W	SMD2835	11000-13000LM	Ip65	WW/PW/CW	150°
LL-CL-100W	AC 100-277V	100W	SMD2835	14000-16000LM	Ip65	WW/PW/CW	150°
LL-CL-120W	AC 100-277V	120W	SMD2835	16000-19000LM	Ip65	WW/PW/CW	150°

LED WALL LIGHT

www.lowcled.com



Application Places

Walls of Super Market, Hotel, Tavern, Night Club, Disco Hall, Karaoke Room, Coffee House, Bank, Meeting Room, Exhibition Hall, Exhibition Wardrobe, Show Window, Living House etc .

LED Wall Light

www.lowcled.com

Features:

- Model: LL-WP-100W
- Power: 100W
- Input Voltage: 100-277VAC
- Frequency: 50/60Hz
- Power Factor: ≥ 0.9
- Material: ADC12+PC
- Chipset: SMD2835
- Housing Color: brown
- Color Temperature: 3000-6500K
- Luminous Flux: 12000lm
- Luminous Efficacy: 120 lm/w
- CRI: >70
- Beam Angle: 90°
- IP Level: IP65
- Operating Temperature: $-40\sim 40^\circ\text{C}$
- Storage Temperature: $-40\sim 90^\circ\text{C}$
- Lifespan: 50,000H
- Warranty: 5years
- Carton Size: 41*28*25cm
- Net Weight/Gross Weight: 3.2/3.8 kg
- Q'ty/Carton: 1 pcs



Model NO.	Power	Input voltage	Lumen	IP	Beam Angle	Warranty
LL-WP-45W	45W	AC100-277V / 120VAC	4950-5400LM	Ip65	90°	5 years
LL-WP-60W	60W	AC100-277V / 120VAC	6600-7200LM	Ip65	90°	5 years
LL-WP-80W	80W	AC100-277V	8800-9600LM	Ip65	90°	5 years
LL-WP-100W	100W	AC100-277V	11000-12000LM	Ip65	90°	5 years
LL-WP-120W	120W	AC100-277V	13200-14400LM	Ip65	90°	5 years
LL-WP-150W	150W	AC100-277V	16300-17300LM	Ip65	90°	5 years

LED TRACK LIGHT

www.lowcled.com



Application Places

Hotel, meeting room, factory, office, bar, coffee house, residential, show room, Institution Buildings, School, hospital, Places where there require high rendering index and energy-saving lighting fixtures.

LED Track Light

www.lowcled.com

Features:

- Product Model: LL-TRK01-20W
- Power: 20W
- Input Voltage: 220-240VAC
- Frequency: 50/60Hz
- Luminous Efficacy: 100-105 lm/W @ CRI80
- Rated Luminous Flux: 2100lm
- Beam Angle: 15°/24°/36°
- Total Harmonic Distortion : < 15%
- Color Temperature (CCT): 2700K / 3000K / 4000K / 5000K
- CRI: 80/90/97
- IP Rating: IP44
- Operating Temperature: -20~+45°C
- Fixture Material: Die casting aluminum
- PF: >0.95
- SDCM: <5
- Housing color: Black/White/Silver
- Lifespan: 50,000H
- Warranty: 3years
- Product Size(D*L*H): 80*150*150mm
- Inner box: 80*150*150 mm
- Gross Weight: 10.4KG/CTN
- Packing Size: 490*310*220 mm,16PCS/CTN



LL-TRK01



LL-TRK02

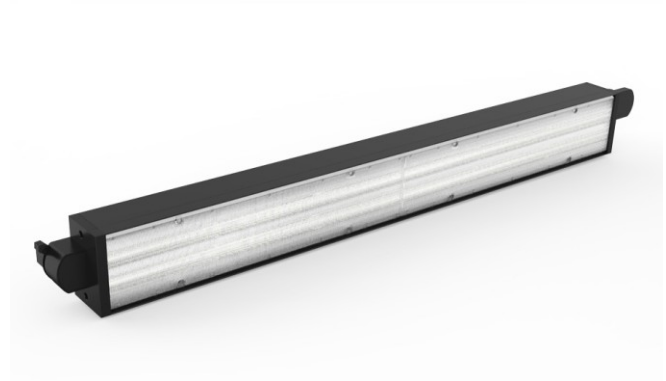


LL-TRK03

Model NO.	Power	AC Input	Chipset	CCT	CRI	Beam Angel	Finish Color
LL-TRK01	20W/25W/30W	AC200-240V	Citizen	2700/3000K 4000K/5000K	80/90/97	15°/24°/36°	White/ Black/Silver
LL-TRK02	20W/25W/30W	AC200-240V	Citizen	2700/3000K 4000K/5000K	80/90/97	12°/24°/38°/60°	White/ Black/Silver
LL-TRK03	25W/30W/35W	AC200-240V	Citizen	2700/3000K 4000K/5000K	80/90/97	15°/24°/36°/60°	White/ Black/Silver

Features:

- Product Model: LL-TRL01-20W
- Power: 20W
- Input Voltage: 220-240VAC
- Frequency: 50/60Hz
- Luminous Efficacy: 130lm/w@Ra80, 110lm/w@Ra90
- Control: DALI
- Beam Angle: 20°/30°/60°/90°
- Total Harmonic Distortion : <20%
- Rated Luminous Flux: 2600lm
- Color Temperature (CCT):
Warm White: 4000K (32700-4400K) Pure White: 5000K (4500~5500K) Cool White: 6000K (6000~6500K)
- CRI: 80/90
- Operating Temperature: -30~+45°C
- Storage Temperature: -40~+70°C
- Fixture Material: Aluminium
- Lifespan: >50,000h (Ta=30°C@L70)
- Warranty: 5years
- Product Size: W70*H50*L600mm
- Gross Weight: 16KG/CTN
- Packing Size: 790*420*260mm,12PCS/CTN



Model NO.	Power	AC Input	Chipset	CCT	CRI	Beam Angel
LL-TRL01-20W	20W	AC200-240V	120PCS SMD2835	4000K	>80	Symmetrical light 30°/60°/90° Polarized light 20°/30°
LL-TRL01-30W	30W	AC200-240V	196PCS SMD2835	4000K	>80	Symmetrical light 30°/60°/90° Polarized light 20°/30°

LED STRIP LIGHT

www.lowcled.com



Application Places

Building, Amusement park, Theater, Shopping mall, Restaurant, Hotel, Advertisement board, Canopy, Corridor, Window, Archway, Signage board, Exhibition, etc.



Features:

- Description: LED neon strip light
- Item NO.: LL-NL2835XW120DC24-T1015
- Power(W/M): 9.6W/M
- Voltage: DC24V
- LED: SMD2835
- LED/M: 120LEDs/M
- CCT: 2700-6500K
- CRI: >80
- Beam angle: 180°
- PCB size(W*H): 5*0.25mm
- Flexible neon light size(W*H): 10*15mm
- SDCM: <6
- Lumen/meter: 576lm/m
- Single LED lumens: 20-22lm
- IP Grade: IP67
- Working temperature: -20℃~45℃
- Cutable length: 5cm/unit, 6leds/group
- Lifespan: 50000H
- Warranty: 3years



Model NO.	LED/M	PCB size	Power(W/M)	CRI	LM/M	CCT	IP
LL-NL2835XW120DC24-T1015	120LEDs/M	5*0.25	9.6W	>80	576lm/M	2700-6500K	Ip67
LL-NL2835XW120DC24-T1322	120LEDs/M	10*0.25	9.6W	>80	480lm/M	2700-6500K	Ip67
LL-NL2835XW120DC24-F1220	120LEDs/M	5*0.25	9.6W	>80	480lm/M	2700-6500K	Ip67
LL-NL2835XW120DC24-F0612	120LEDs/M	5*0.35	9.6W	>80	576lm/M	2700-6500K	Ip67
LL-NL5050RGB060DC24-T1322	60LEDs/M	10*0.25	14.4W	>80	480lm/M	RGB	Ip67
LL-NL5050RGB060DC24-F1220	60LEDs/M	10*0.25	14.4W	>80	480lm/M	RGB	Ip67
LL-NL5050RGB060DC24-T1322(Pixel)	60LEDs/M	10*0.25	14.4W	>80	480lm/M	RGB	Ip67
LL-NL5050RGB060DC24-F1220(Pixel)	60LEDs/M	10*0.25	14.4W	>80	480lm/M	RGB	Ip67

LED Strip Light

www.lowcled.com



Features:

- Description: Mixed color LED strip light
- Item NO.: LL-MX5050RGBWW060-W12
- Power(W/M): 12W (WW) + 12W (RGB)
- Voltage: DC12/24V
- LED: 5IN1 SMD5050
- LED/M: 60LEDs/M
- CCT: RGBWW
- Beam angle: 120°
- FPCB size(W*H): 12*0.35mm
- Lumen/meter: RGB + 960lm/M
- IP Grade: IP20(IP65/IP67/IP68)
- Working temperature: -20°C~45°C
- Cutable length: 10cm/unit, 3leds/group
- Warranty: 2years
- Carton size: 520*420*465mm
- Gross weight: 13KG
- Q'ty/carton: 32PCS



Model NO.	Power	Voltage	LED	CCT	Beam angle	IP
LL-MX5050RGB+3014WW060-W12	12W(3014)+2W(RGB)	12/24V	5050RGB+3014WW	RGB+(2700-6500K)	120°	IP20/IP65/IP67/IP68
LL-MX5050RGB+WW060-W12	6W(WW)+7.2W(RGB)	12/24V	5050RGB+5050WW	RGB+(2700-6500K)	120°	IP20/IP65/IP67/IP68
LL-MX5050RGBXW030-W12	9.4W	12/24V	30LEDs/M	RGB+(2700-6500K)	120°	IP20/IP65/IP67/IP68
LL-MX5050RGBXW060-W12	19.2W	12/24V	60LEDs/M	RGB+(2700-6500K)	120°	IP20/IP65/IP67/IP68
LL-MX5050RGBXW084-W12	26.5W	12/24V	84LEDs/M	RGB+(2700-6500K)	120°	IP20/IP65/IP67/IP68
LL-MX5050RGBWW060-W12	12W(WW)+12W(RGB)	12/24V	60LEDs/M	RGB+(2700-6500K)	120°	IP20/IP65/IP67/IP68
LL-MX5050RGBWW084-W12	16.8W(WW)+16.8W(RGB)	12/24V	84LEDs/M	RGB+(2700-6500K)	120°	IP20/IP65/IP67/IP68



Features:

- Description: Side illumination SMD3014 LED strip light
- Item NO.: LL-SV3014XW060-IP20
- Power(W/M): 5W/M
- Voltage: DC12/24V
- LED: SMD3014
- LED/M: 60LEDs/M
- CCT: 2700-6500K
- CRI: >80
- Beam angle: 120°
- PCB size(W*H): 8*0.25mm
- SDCM: <6
- Lumen/meter: 425lm/m
- Single LED lumens: 10-12lm
- IP Grade: IP20(IP65/IP67/IP68)
- Working temperature: -20°C~45°C
- Cutable length: 5cm/unit, 3leds/group



Model NO.	Power(W/M)	Vol.	LED/M	CCT	Beamangle	CRI	IP
LL-2216XW060	4.8W/M	12/24V	60LEDs/M	2700-6500K	120°	>90	IP20/IP65/IP67/IP68
LL-2216XW120	9.6W/M	12/24V	120LEDs/M	2700-6500K	120°	>90	IP20/IP65/IP67/IP68
LL-2216XW240	18W/M	12/24V	240LEDs/M	2700-6500K	120°	>90	IP20/IP65/IP67/IP68
LL-2216XW300	20W/M	12/24V	300LEDs/M	2700-6500K	120°	>90	IP20/IP65/IP67/IP68
LL-SV3014XW060	5W/M	12/24V	60LEDs/M	2700-6500K	120°	>80	IP20/IP65/IP67
LL-SV3014XW1201(single row)	10W/M	12/24V	120LEDs/M	2700-6500K	120°	>80	IP20/IP65/IP67
LL-SV3014XW1202(double row)	10W/M	12/24V	120LEDs/M	2700-6500K	120°	>80	IP20/IP65/IP67
LL-SV3014XW120	20W/M	12/24V	240LEDs/M	2700-6500K	120°	>80	IP20/IP65/IP67
LL-DG2427RGB060V5-W08	12W/M	5V	60LEDs/M	Digital RGB	120°	/	IP20/IP65/IP67/IP68
LL-DG5050RGB030V5-W10	7W/M	5V	30LEDs/M	Digital RGB	120°	/	IP20/IP65/IP67/IP68
LL-DG5050RGB060V5-W10	12W/M	5V	60LEDs/M	Digital RGB	120°	/	IP20/IP65/IP67/IP68

LED PANEL LIGHT

www.lowcled.com

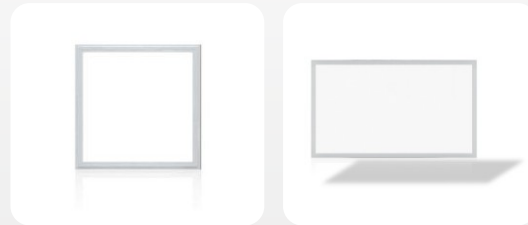


Application Places

Hotel, meeting room, factory, office, bar, coffee house, residential, show room, Institution Buildings, School, hospital, Places where there require high rendering index and energy-saving lighting fixtures.

Features:

- Model: LL-ZPL-595X595-40W-001
- Type: Backlit LED Panel Light
- Power (±10%) : 40W
- Input(Frequency): AC 220-240V (50/60Hz)
- Lumen: 4000lm
- Input Current: 0.2A
- Output Voltage: DC30-40V
- Output Current: 9600mA
- PF: >0.9
- LED Type: SMD2835
- CCT(K): 3000K / 4000K / 6000K
- CIR(Ra): ≥80
- Beam angle: 120°
- Working Temperature: -20°C~40°C
- Storage Temperature: -30°C~60°C
- Life span of Light Source: ≥50000 H
- IP Grade: IP40
- Body Materials: PP+Aluminum
- Product Dimension: 595*595*30mm
- Carton Size: 690*265*640mm(5pcs)
- Gross Weight: 14.5 kg (5pcs)



Model NO.	Power	Size	LED type	CCT	Voltage	Lumen
LL-PL-P595X595-36W	36W	595*595*9.5mm	0.2W 4014SMD	2700-6500K	200-240VAC	2900-3200LM
LL-PL-E295X295-20W	20W	295*295*9.8mm	0.2W 4014SMD	2700-6500K	200-240VAC	1800-2000LM
LL-PL-E295X595-25W	25W	295*595*9.8mm	0.2W 4014SMD	2700-6500K	200-240VAC	2200-2500LM
LL-PL-E595X595-40W	40W	595*595*9.8mm	0.2W 4014SMD	2700-6500K	200-240VAC	3600-4000LM
LL-PL-E295X1195-40W	40W	295*1195*9.8mm	0.2W 4014SMD	2700-6500K	200-240VAC	3600-4000LM
LL-PL-E595X1195-36W	60W	595*1195*9.8mm	0.2W 4014SMD	2700-6500K	200-240VAC	5400-6000LM

LED Panel Light

www.lowcled.com

Features:

- Model: LL-PL-R170
- Power (±10%) : 12W
- Product Size: Ø170*12mm
- Cut size: Ø155mm
- Input(Frequency): AC 100-240V (50/60Hz) (AC110V/220V For dimmable)
- Lumen: >75LM/W
- PF: >0.9
- Input Current: 0.15A
- Output Voltage: DC25-40V
- Output Current: 300mA
- LED Type: SMD2835
- CCT(K): 3000K / 4000K / 6000K
- CIR(Ra): ≥80
- Beam angle: 110°
- Working Temperature: -25°C~60°C
- Life span of Light Source: ≧ 50000 H
- IP Grade: IP54
- Body Materials: Aluminum Alloy + acrylic
- Lighting Guide Plate: PS
- Lamp Shell Color: White/Silver
- Mounting: Recessed
- Function Options: Non-dimmable and Dimmable available
- Carton Size: 460*350*400mm(40pcs)
- Gross Weight: 15 kg (40pcs)

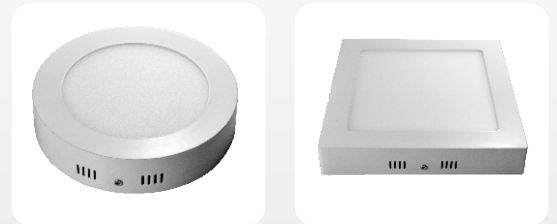


Model NO.	Power	Size	Lumen
LL-PL-R90	3W	90*8.5mm	90-100LM
LL-PL-R120	6W	120*8.5mm	250-260LM
LL-PL-R145	9W	150*8.5mm	500-550LM
LL-PL-R170	12W	170*8.5mm	650-700LM
LL-PL-R200	15W	195*8.5mm	90-1000LM
LL-PL-R225	18W	225*8.5mm	1100-1150LM
LL-PL-R300	24W	300*8.5mm	1850-1900LM

Model NO.	Power	Size	Lumen
LL-PL-S90	3W	90*90*8.5mm	160-180LM
LL-PL-S120	6W	120*120*8.5mm	350-420LM
LL-PL-S145	9W	150*150*8.5mm	600-680LM
LL-PL-S170	12W	170*170*8.5mm	850-950LM
LL-PL-S195	15W	195*195*8.5mm	1200-1300LM
LL-PL-S225	18W	225*225*8.5mm	1400-1600LM
LL-PL-S300	24W	300*300*8.5mm	1900-2200LM

Features:

- Model: LL-SPLS-170X170
- Power ($\pm 10\%$) : 12W
- Input(Frequency): AC 100-240V (50/60Hz)
- Lumen: 900 \pm 100lm
- Input Current: 0.06A
- Output Voltage: DC36-65V
- Output Current: 300mA
- PF: >0.9
- Efficiency: $\eta > 0.85$
- LED Type: SMD2835
- LED Q'ty: 60 PCS
- CCT(K): 3000K / 4000K / 6000K
- CIR(Ra): ≥ 80
- Beam angle: 120°
- Working Temperature: -25°C ~ 60°C
- Storage Temperature: -40°C ~ 80°C
- Lumen Maintenance: >85% (5000Hrs)
- Life span of Light Source: ≥ 50000 H
- IP Grade: IP54
- Body Materials: Aluminum Alloy + acrylic
- Product Dimension: 180*180*40mm
- Carton Size: 530*430*227mm(20pcs)
- Gross Weight: 15 kg (20pcs)



Model NO.	Power	Size	Lumen
LL-SPL-R120	6W	120*35mm	350-420LM
LL-SPL-R170	12W	170*35mm	850-950LM
LL-SPL-R225	18W	225*35mm	1400-1500LM
LL-SPL-R300	24W	300*35mm	1900-2100LM

Model NO.	Power	Size	Lumen
LL-SPLS-120X120	6W	120*35mm	350-420LM
LL-SPLS-170X170	12W	170*35mm	850-950LM
LL-SPLS-225X225	18W	225*35mm	1400-1500LM
LL-SPLS-300X300	24W	300*35mm	1900-2100LM

LED SMART LIGHT

www.lowcled.com

Application Places

Bathroom Lighting, Living Room Lighting, Home Theater Lighting, Commercial Ceiling Down Lighting, Office LED Lighting, Den Lighting, Pot Lighting, Art gallery, Exhibitions, Showroom etc.

Features:

- Model: LL-A60-BLE-7W
- Power (±10%) : 7W
- Input(Frequency): AC 100-240V (50/60Hz)
- PF: >0.5
- Lumen (±10%) Lm: 600lm(max), 0lm(min)
- CCT(K): 2700K-6500K+RGB 16+million kinds
- Brightness: 2%-100%
- CIR(Ra): >80
- Beam angle: 220°
- Base: E27 / E26 / B22
- Working Temperature: -20°C~40°C
- Storage Temperature: -30°C~60°C
- Life span of Light Source: ≥ 50000 H
- IP Grade: IP20
- Product Size: 60*118mm
- Net Weight: 80g
- Carton Size: 650*345*300mm(100pcs)
- Gross weight: 12 kg(100pcs)



LL-A60-5W / 7W / 9W



LL-R63-9W



LL-GU10-5W



LL-R63-9W

Model NO.	Power	Size	Lumen	Input	Color	Base	Control
LL-A60-IR-5W	5W	φ60*108	230LM	100-240V	RGB+W	E27/E26/B22	IR controller control RGBW bulb
LL-A60-2.4G/WIFI/BLE-7W	7W	φ60*118	230LM/560LM	100-240V	RGB+W / RGB+(2700-6500)	E27/E26/B22	2.4G Remoter / Bluetooth or WIFI or Voice Control
LL-A60-WIFI/BLE-9W	9W	φ60*118	800LM(max)	100-240V	RGB+W	E27/E26/B22	Bluetooth or WIFI or Voice Control
LL-GU10-IR/BLE-5W	5W	φ50*72	230LM/350LM	100-240V	RGB / RGB+(2700-6500)	Gu10	IR controller / Bluetooth or WIFI or Voice Control
LL-R63-BLE-9W	9W	φ63*94	720LM	100-240V	RGB+W	E27/E26/B22	Bluetooth or WIFI or Voice Control
LL-C37-BLE-4.5W	4.5W	φ37*100	350LM	100-240V	2700-6500	E14	Bluetooth or WIFI or Voice Control

LED Smart Light

www.lowcled.com

Features:

- Model: LL-BPL-595X595-RGB-40W
- Power (±10%) : 40W
- Input(Frequency): AC 220-240V (50/60Hz)
- Input Current: 0.3A
- Output Voltage: DC20-36V
- Output Current: 1300mA
- PF: >0.9
- LED Type: SMD2835 + RGB3528
- CCT(K): RGB/2700-6500K
- Brightness: 1%-100%
- CIR(Ra): ≥80
- Beam angle: 110°
- Working Temperature: -20°C~45°C
- Storage Temperature: -30°C~60°C
- Life span of Light Source: ≧ 50000 H
- IP Grade: IP20
- Function options: Bluetooth APP(Android&iOS)
- Body Materials: Aluminum
- Mounting: Recessed
- Product Dimension: 595*595*10.7mm
- Carton Size: 690*215*640mm(5pcs)
- Gross Weight: 20.7 kg (5pcs)



LL-BPL-6W / 12W / 18W



LL-BPL-20W / 30W / 40W



LL-DLS-6W/12W/18W-001

Model NO.	Power	LED Type	Size	Voltage	CCT	Control
LL-BPL-10035-6W	6W	SMD2835+5050	Φ 100 x 35mm	100-240VAC	2700-6500K RGB	Bluetooth(Wifi/Voice control)
LL-BPL-16035-12W	12W	SMD2835+5050	Φ 160 x 35mm	100-240VAC	2700-6500K RGB	Bluetooth(Wifi/Voice control)
LL-BPL-20035-18W	18W	SMD2835+5050	Φ 200 x 35mm	100-240VAC	2700-6500K RGB	Bluetooth(Wifi/Voice control)
LL-BPL-295X295-20W	20W	SMD2835+3535	295*295*10.7mm	100-240VAC	2700-6500K RGB	Bluetooth(Wifi/Voice control)
LL-BPL-295X595-30W	30W	SMD2835+3535	295*595*10.7mm	100-240VAC	2700-6500K RGB	Bluetooth(Wifi/Voice control)
LL-BPL-595X595-40W	40W	SMD2835+3535	595*595*10.7mm	100-240VAC	2700-6500K RGB	Bluetooth(Wifi/Voice control)
LL-BPL-295X1195-20W	40W	SMD2835+3535	295*1195*10.7mm	100-240VAC	2700-6500K RGB	Bluetooth(Wifi/Voice control)
LL-DLS-6W-001	6W	SMD2835+3535	Φ 100	100-240VAC	2700-6500K RGB	Bluetooth(Wifi/Voice control)
LL-DLS-12W-001	12W	SMD2835+3535	Φ 160	100-240VAC	2700-6500K RGB	Bluetooth(Wifi/Voice control)
LL-DLS-18W-001	18W	SMD2835+3535	Φ 200	100-240VAC	2700-6500K RGB	Bluetooth(Wifi/Voice control)

LED DOWN LIGHT

www.lowcled.com



Application Places

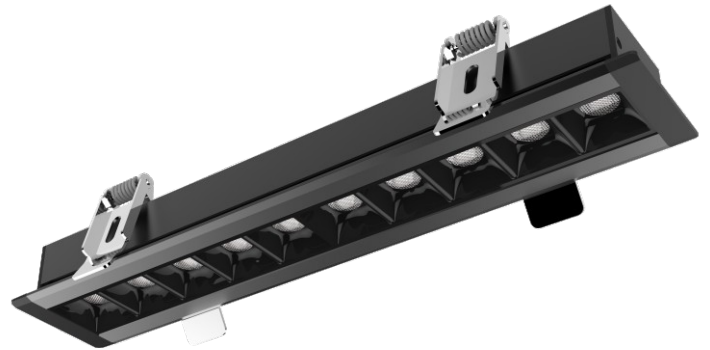
Hotel, meeting room, factory, office, bar, coffee house, residential, show room, Institution Buildings, School, hospital, Places where there require high rendering index and energy-saving lighting fixtures.

LED Down Light

www.lowcled.com

Features:

- Model: LL-DL30-15
- Power rating: 30W
- Working Voltage: 220-240V
- Qty of LEDs 15pcs CREE XTE(1-5W)
- Luminous efficiency: 65lm/W @4000K
- CCT: 3000K / 4000K / 6000
- PF: >0.9
- CRI: >80
- UGR<19
- Lens degree: 10° /24° /36° /48°
- Dimension W55.5*H30*L428mm
- Lift time could reach 50,000 hrs.
- Warranty: 5 years



LL-DL30-05



LL-D30-10

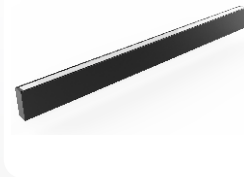


LL-DL30-15

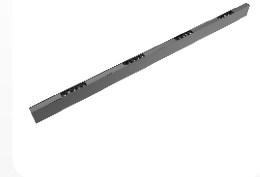
Model NO.	Power	LED Type	LM/W	CCT	Input voltage	Beam Angle	Warranty
LL-DL30-02	4W	2PCS CREE XTE	65LM/W	4000K	220-240V	10°/36°/48°	5 years
LL-DL30-03	6W	3PCS CREE XTE	65LM/W	4000K	220-240V	10°/36°/48°	5 years
LL-DL30-05	10W	5PCS CREE XTE	65LM/W	4000K	220-240V	10°/36°/48°	5 years
LL-DL30-10	20W	10PCS CREE XTE	65LM/W	4000K	220-240V	10°/36°/48°	5 years
LL-DL30-15	30W	15PCS CREE XTE	65LM/W	4000K	220-240V	10°/36°/48°	5 years
LL-DL30-10-F	30W	140PCS OSRAM SMD2835	90LM/W	4000K	220-240V	100°	5 years
LL-DL30-12-F	40W	196PCS OSRAM SMD2835	90LM/W	4000K	220-240V	100°	5 years
LL-DL30-15-F	50W	224PCS OSRAM SMD2835	90LM/W	4000K	220-240V	100°	5 years

Features:

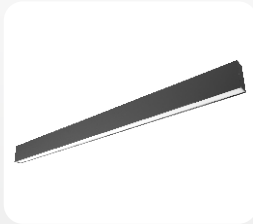
- Model: LL-DL76-2F
- Luminous Flux : 1300/1950LM
- Power: 20/30W
- CCT: 3000K, 4000K
- CRI: > 80
- Beam Angle: 10° 24° 36° 48° +100°
- Input Voltage: 220-240VAC
- Total Harmonic Distortion: <20%
- Life Span: >50000Hrs(Ta=30°C@L70)
- Operating Temperature : -30~+45°C
- Storage Temperature : -40~+70°C
- Junction Temperature(Tj) : <70°C(Ta=30°C)
- Warranty: 5 years



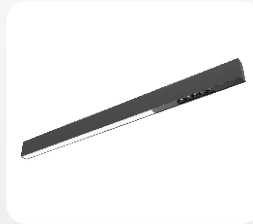
LL-D90-F



LL-DL90-4C



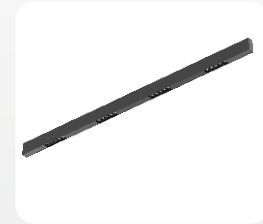
LL-DL76-F



LL-DL76-1F



LL-DL76-2F



LL-DL76-4C

Model NO.	Power	LED Type	LM/W	CCT	Input voltage	Beam Angle	Warranty
LL-DL76-F	30W/40W/50W	OSRAM SMD2835	90LM/W	4000K	220-240V	100°	5 years
LL-DL76-1F	30W/40W	CREE CTE+OSRAM SMD2835	65LM/W	4000K	220-240V	Part spot:10°/36°/48° Part PMMA cover: 100°	5 years
LL-DL76-2F	30W/40W/50W	CREE CTE+OSRAM SMD2835	65LM/W	4000K	220-240V	Part spot:10°/36°/48° Part PMMA cover: 100°	5 years
LL-DL76-2C/3C/4C	20W/30W/40W	CREE CTE	65LM/W	4000K	220-240V	10°/36°/48°	5 years
LL-DL90-F	45W/55W/65W	OSRAM SMD2835	UP: 65LM/W DOWN:90LM/W	4000K	220-240V	100°	5 years
LL-DL90-2C/3C/4C	35W/45W/55W	CREE CTE+OSRAM SMD2835	65LM/W	4000K	220-240V	Part spot:10°/36°/48° Part PMMA cover: 100°	5 years

LED BULB LIGHT

www.lowcled.com



Application Places

shopping malls, supermarkets, office buildings, home appliance and other places.

Features:

- Model: LL-G60-9W
- Power: 9W
- Lumious flux:750-810LM
- Power consumption: 8.9±10%W
- Voltage available:100-240VAC
- Current:0.068A MAX
- Frequency: 50Hz
- Power Factor: 0.43Pf
- Beam Angle: 220 Deg
- Working Temperature:-10~50°C
- Relative Humidity: 10%-90%RH
- Color Temperature: 2700K-3200K 5500K-6500K
- Base: E27/E26/B22
- LED Qty: 7PCS
- LED Power:1W
- Lifetime: 30000H(25°C)
- CE and ROHS approved



G45(E14)



G45(E27)



G60, G70



G120

Model NO.	Power	Base	Color	Lumen	Beam angle	Input voltage	Product size
LL-G45-3W	3.5W	E14/B15/E27/E26/B22	2700-6500K	210LM	200°	100-265VAC	Φ45×75mm
LL-G45-5W	4.5W	E14/B15/E27/E26/B22	2700-6500K	350LM	200°	100-265VAC	Φ45×78mm
LL-G60-5W	5W	E27/E26/B22	2700-6500K	400LM	200°	100-265VAC	Φ60×109mm
LL-G60-7W	7W	E27/E26/B22	2700-6500K	560LM	200°	100-265VAC	Φ60×109mm
LL-G60-9W	9W	E27/E26/B22	2700-6500K	750LM	200°	100-265VAC	Φ60×109mm
LL-G60-10W/12W	10W/11W	E27/E26/B22	2700-6500K	900LM/1100LM	200°	100-265VAC	Φ60×118mm
LL-G70-13W	13W	E27/E26/B22	2700-6500K	1300LM	200°	100-265VAC	Φ70×140mm
LL-G70-15W	15W	E27/E26/B22	2700-6500K	1500LM	200°	100-265VAC	Φ70×140mm
LL-G120-18W	18W	E27/E26/B22	2700-6500K	1800LM	160°	100-265VAC	Φ120×158mm

LED Bulb Light

www.lowcled.com

Features:

- Model: LL-C37-5W-S6
- Base:E14/B15/E27/E26/B22
- Power: 4.5W
- EQ.Watts: 25W
- Lumen: 350LM
- LED Q'ty: 6PCS
- Power factor: >0.4
- Color Rendering Index(CRI): $Ra \geq 80$
- Color Temperature(CCT): 2700-6500K
- Beam Angle: 260°
- Input Voltage: 100-265VAC
- Frequency: 47-63Hz
- Lifetime: 30000H(25°C)
- CE and ROHS approved



Model NO.	Power	Base	Lumen	Beam angle	Input voltage	Product size
LL-C37-3W-S6	3W	E14/B15/E27/E26/B22	210LM	260°	100-265VAC	Φ37×100mm
LL-C37-5W-S6	4.5W	E14/B15/E27/E26/B22	350LM	260°	100-265VAC	Φ37×100mm

LED TUBE LIGHT

www.lowcled.com

Application Places

Hotel, meeting room, factory, office, bar, coffee house, residential, show room, school, hospital, supper market, subways, and other public places.

LED Tube Light

www.lowcled.com

Features:

- Model: LL-T5/600-48P-3C-FT
- Power (±10%) : 9W
- Input(Frequency): AC 90-265V (50/60Hz)
- PF: >0.9
- LED Qty (SMD2835)/PCS: 48
- Lumen (±10%) Lm: 950lm
- CCT(K): 2800-6500K
- CIR(Ra): >80
- Beam angle: 120°
- Withstand Voltage: >3000V AC
- EMC: Pass
- Working Temperature: -20°C~45°C
- Humidity: 20%~80%RH
- Storage Temperature: -30°C~60°C
- Life span of Light Source: \geq 50000 H
- Material: Aluminum + PC
- Temperature Rise: <35°C
- IP Grade: IP20
- Net Weight: 75g



Without Bracket



With Bracket

Model NO.	Bracket	Power	Length(mm)	LED type	Input voltage	Ra	Lumen
LL-T5/600-48P-3C-FT	Without	9W	600	SMD2835(48PCS)	90 - 265V AC	80	900-950LM
LL-T5/1200-96P-3C-FT	Without	18W	1200	SMD2835(96PCS)	90 - 265V AC	80	1800-1900LM
LL-T5/1500-120P-3C-FT	Without	24W	1500	SMD2835(120PCS)	90 - 265V AC	80	2200-2300LM
LL-T5/600-48P-3C-YT	With	9W	600	SMD2835(48PCS)	90 - 265V AC	80	900-950LM
LL-T5/1200-96P-3C-YT	With	18W	1200	SMD2835(96PCS)	90 - 265V AC	80	1800-1900LM
LL-T5/1500-120P-3C-YT	With	24W	1500	SMD2835(120PCS)	90 - 265V AC	80	2200-2300LM

Features:

- Model: LL-T8/1200-96P-3C-H-IN-02
- Power (±10%) : 18W
- Input(Frequency): AC 90-265V (50/60Hz)
- PF: >0.9
- LED Qty (SMD2835)/PCS: 96
- Lumen (±10%) Lm: 1900lm
- CCT(K): 2800-6500K
- CIR(Ra): >80
- Beam angle: 120°
- Withstand Voltage: >3000V AC
- EMC: Pass
- Working Temperature: -20°C~45°C
- Humidity: 20%~80%RH
- Storage Temperature: -30°C~60°C
- Life span of Light Source: ≥ 50000 H
- Material: Aluminum + PC
- Temperature Rise: <35°C
- IP Grade: IP20
- Net Weight: 361g



Without Bracket



With Bracket

Model NO.	Driver	Power	Length	LED type	Input voltage	Ra	Lumen
LL-T8/600-48P-3C-A01	Non-isolated	9W	600mm	SMD2835(48PCS)	180-265VAC	70	700-750LM
LL-T8/1200-96P-3C-A01	Non-isolated	18W	1200mm	SMD2835(96PCS)	180-265VAC	70	1500-1550LM
LL-T8/1500-120P-3C-A01	Non-isolated	24W	1500mm	SMD2835(120PCS)	180-265VAC	70	1900-2000LM
LL-T8/600-48P-3C-A02	Isolated	9W	600mm	SMD2835(48PCS)	90-265VAC	80	850-950LM
LL-T8/1200-96P-3C-A02	Isolated	18W	1200mm	SMD2835(96PCS)	90-265VAC	80	1800-1900LM
LL-T8/1500-120P-3C-A02	Isolated	24W	1500mm	SMD2835(120PCS)	90-265VAC	80	2400-2500LM

LED Tube Light

www.lowcled.com

Features:

- Model: LL-T8/600-48P-3C-A02
- Power (±10%) : 9W
- Input(Frequency): AC 90-265V (50/60Hz)
- PF: >0.9
- LED Qty (SMD2835)/PCS: 42
- Lumen (±10%) Lm: 950lm
- CCT(K): 3000-6500K
- CIR(Ra): >80
- Beam angle: 330°
- Withstand Voltage: >3000V AC
- EMC: Pass
- Working Temperature: -20℃~45℃
- Humidity: 20%~80%RH
- Storage Temperature: -30℃~60℃
- Life span of Light Source: ≥ 50000 H
- Material: Glass + PC plug
- Temperature Rise: <35℃
- IP Grade: IP20
- Net Weight: 115g



Model NO.	Isolated driver	Power	Length(mm)	LED type	Input voltage	Ra	Lumen
LL-T8/600-42P-3C-G01	Without	9W	600mm	SMD2835(42PCS)	180-265VAC	70	650-700LM
LL-T8/1200-88P-3C-G01	Without	18W	1200mm	SMD2835(88PCS)	180-265VAC	70	1500-1700LM
LL-T8/1500-120P-3C-G01	Without	22W	1500mm	SMD2835(120PCS)	180-265VAC	70	1800-1900LM
LL-T8/600-42P-3C-G02	With	9W	600mm	SMD2835(42PCS)	90-265VAC	70	900-950LM
LL-T8/1200-92P-3C-G02	With	18W	1200mm	SMD2835(92PCS)	90-265VAC	70	1800-1900LM
LL-T8/1500-120P-3C-G02	With	22W	1500mm	SMD2835(120PCS)	90-265VAC	70	2100-2200LM

LED TRI-PROOF LIGHT

www.lowcled.com

Application Places

Factory, tunnel, underground mine, school, hospital, parking lot, warehouse, square, supermarket, courtyard and so on.

LED Tri-proof Light

www.lowcled.com

Features:

- Model: LL-TP120-T2
- Power: 36W
- Input Voltage: 90-265V AC
- Frequency: 50/60Hz
- Power Factor: >0.9
- Total Harmonic Distortion: <20%
- Color Temperature: 3000-6500K
- Luminous Flux: 3000lm
- Luminous Efficacy: 85 lm/w
- CRI: >80
- Beam Angle: 120°
- IP Level: IP65
- IK Grade: IK08
- Operating Temperature: -20~45°C
- Storage Temperature: -30~60°C
- Lifespan: 50,000h
- Carton Dimension: 1295*285*300mm
- Q'ty/Carton: 6pcs
- Gross Weight: 19.2 kg7---55
- Lifespan: 50,000hrs



LL-TP-T1



LL-TP-T2



LL-TP-F1



LL-TP-F2

Model NO.	Description	Power	Length(mm)	LED type	Input voltage	Ra	Lumen
LL-TP-T1	Single Tube Transparent Cover	10W/18W/22W	663/1265/1565	SMD2835	90-265VAC	80	850-1900LM
LL-TP-T2	Double Tube Transparent Cover	20W/36W/44W	663/1265/1565	SMD2835	90-265VAC	80	1600-3800LM
LL-TP-F1	Single Line SMD Frosted Cover	10W/15W/20W/30W/25W/40W	662/1272/1566	SMD2835	90-265VAC	80	850-1900LM
LL-TP-F2	Double Line SMD Frosted Cover	20W/25W/40W/50W/60W	662/1272/1566	SMD2835	90-265VAC	80	1600-3800LM

LED LINEAR LIGHT

www.lowcled.com

Application Places

Kitchen, Offices, Hallways, Corridors, Foyers, Bedrooms, Closets, Utility work areas etc.

LED Linear Light

www.lowcled.com



Features:

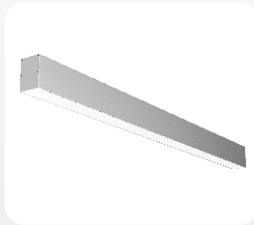
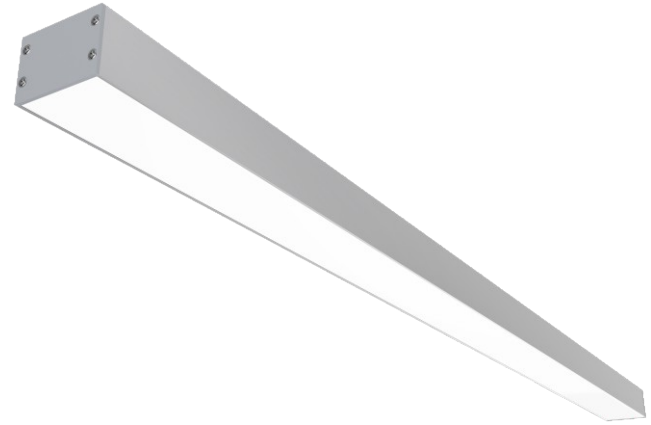
- Description: Round LED linear tube light
- Item NO. :LL-L4040-01
- Power: 20W/25W/30W
- LED: 168pcs SMD2835 / 192pcs SMD2835 240pcs SMD2835
- Luminous Flux: 1800LM/2250LM/2700LM
- Size: $\varnothing 40 \times 1000\text{mm}$ / $\varnothing 40 \times 1200\text{mm}$ / $\varnothing 40 \times 1500\text{mm}$
- CCT: 3000K, 4000K, 6000K
- CRI: > Ra80
- Beam Angle: 120°
- IP Grade: IP40
- Input Voltage: DC24V
- Total Harmonic Distortion: <20%
- Operating Temperature : -30~+45°C
- Storage Temperature : -40~+70°C
- Junction Temperature(Tj) : <70°C(Ta=30°C)
- Life Span: >50000Hrs(Ta=30°C@L70)
- Warranty: 3years



Model NO.	Power	Length(mm)	Input voltage	LED type	Color	Ra	Luminosity	Beam angle
LL-L4040-01	20/25/30	$\varnothing 40 \times 1000/1200/1500\text{mm}$	DC24V	SMD2835	4000K	>80	90lm/W	120°
LL-L4040-02	20/25/30	$\varnothing 40 \times 1000/1200/1500\text{mm}$	100-240VAC	SMD2835	4000K	>80	90lm/W	120°
LL-L4040-03	20/25/30	$\varnothing 40 \times 1000/1200/1500\text{mm}$	100-265VAC	SMD2835	4000K	>80	90lm/W	120°
LL-L6060-01	30/40/50	$\varnothing 60 \times 1000/1200/1500\text{mm}$	100-240VAC	SMD2835	4000K	>80	100lm/W	200°
LL-L6060-02	30/40/50	$\varnothing 60 \times 1000/1200/1500\text{mm}$	220-240VAC	SMD2835	4000K	>80	100lm/W	200°
LL-L8080-01	40/45	$\varnothing 80 \times 1000/1200/1500\text{mm}$	100-240VAC	SMD2835	4000K	>80	100lm/W	200°
LL-L8080-02	40/45/50	$\varnothing 80 \times 1000/1200/1500\text{mm}$	220-240VAC	SMD2835	4000K	>80	100lm/W	200°
LL-L8080-03	40/45/50	$\varnothing 80 \times 1000/1200/1500\text{mm}$	100-277VAC	SMD2835	4000K	>80	100lm/W	200°

Features:

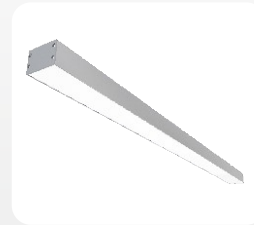
- Description: Jointable LED linear light
- Item NO. :LL-L5035-01
- Power: 40W/50W/60W
- LED: 192pcs SMD2835 / 240pcs SMD2835 288pcs SMD2835
- Luminous Flux: 3200LM/ 4000LM/ 4800LM
- Size(W*H*L): 50*35*1000mm / 50*35*1200mm / 50*35*1500mm
- CCT: 3000K, 4000K, 6000K
- CRI: > Ra80
- Beam Angle:100°
- IP Grade: IP40
- Input Voltage: 100-277VAC
- Total Harmonic Distortion: <20%
- Operating Temperature : -30~+45°C
- Storage Temperature : -40~+70°C
- Junction Temperature(Tj) : <70°C(Ta=30°C)
- Life Span: >50000Hrs(Ta=30°C@L70)
- Warranty: 5years



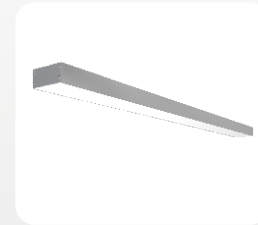
LL-L5656



LL-L4245



LL-L5035



LL-L7535

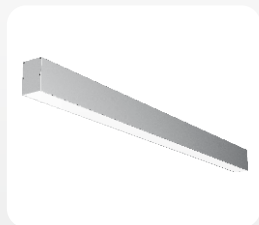
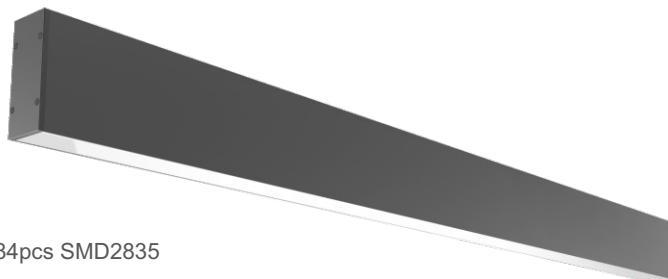
Model NO.	Power(W)	Length(mm)	Input voltage	LED type	Color	Ra	Luminosity	Beam angle
LL-L5656-01	30/32/60	56*65*1000/1200/2000/2400mm	200-240VAC	SMD2835	4000K	>80	90lm/W	120°
LL-L5656-02	30/36/54/60	56*65*1000/1200/2000/2400mm	100-240VAC	SMD2835	4000K	>80	90lm/W	120°
LL-L4245-01	22	42*45*1000/1200mm	100-240VAC	SMD2835	4000K	>80	90lm/W	120°
LL-L5035-01	40/50/60	50*35*1000/1200/1500mm	100-277VAC	SMD2835	4000K	>80	80lm/W	100°
LL-L5035-02	40/50/60	50*35*1000/1200/1500mm	200-240VAC	SMD2835	4000K	>80	80lm/W	100°
LL-L5035-X1	30/40/50	50*35*1000/1200/1500mm	200-240VAC	SMD2835	4000K	>80	80lm/W	100°
LL-L5035-X2	30/40/50	50*35*1000/1200/1500mm	100-277VAC	SMD2835	4000K	>80	80lm/W	100°
LL-L7535-01/02	40/50/60	75*35*1000/1200/1500mm	220-240VAC	SMD2835	4000K	>80	80lm/W	110°
LL-L7535-03/04	40/50/60	75*35*1000/1200/1500mm	100-277VAC	SMD2835	4000K	>80	80lm/W	110°

LED Linear Light

www.lowcled.com

Features:

- Description: Up and down LED Linear Light
- Item NO. :LL-L3583-02
- Power: 30W/40W/54W/60W
- LED: 288pcs SMD2835 / 324pcs SMD2835 / 384pcs SMD2835 / 384pcs SMD2835
- Luminous Flux: 2650LM/ 3250LM/ 4250LM/ 5050LM
- Size(W*H*L): 35*83*1000mm / 35*83*1200mm / 35*83*2000mm /35*83*2400mm
- CCT: 3000K, 4000K, 6000K
- CRI: > Ra80
- Beam Angle:120°
- IP Grade: IP40
- Input Voltage: 100-240VAC
- Total Harmonic Distortion: <20%
- Operating Temperature : -30~+45°C
- Storage Temperature : -40~+70°C
- Junction Temperature(Tj) : <70°C(Ta=30°C)
- Life Span: >50000Hrs(Ta=30°C@L70)
- Warranty: 3years



LL-L5070



LL-L3583



LL-L7578



LL-L7562

Model NO.	Power	Length(mm)	Input voltage	LED type	Color	Ra	Luminosity	Beam angle
LL-L5070-01	30/40/50	50*70*1000/1200/1500mm	200-240VAC	SMD2835	4000K	>80	80lm/W	100°
LL-L5070-02	30/40/50	50*70*1000/1200/1500mm	100-277VAC	SMD2835	4000K	>80	80lm/W	100°
LL-L3583-01	30/60	35*83*1000/1200/2000/2400mm	200-240VAC	SMD2835	4000K	>80	80lm/W	120°
LL-L3583-02	30/40/54/60	35*83*1000/1200/2000/2400mm	100-240VAC	SMD2835	4000K	>80	80lm/W	120°
LL-L7578-01/02	40/50/60	75*78*1000/1200/1500mm	200-240VAC	SMD2835	4000K	>80	80lm/W	110°
LL-L7578-03/04	40/50/60	75*78*1000/1200/1500mm	100-277VAC	SMD2835	4000K	>80	80lm/W	110°
LL-L7562-01/02	40/50/60	75*62*1000/1200/1500mm	200-240VAC	SMD2835	4000K	>80	80lm/W	110°
LL-L7562-03/04	40/50/60	75*62*1000/1200/1500mm	100-277VAC	SMD2835	4000K	>80	80lm/W	110°

LED GROW LIGHT

www.lowcled.com

Application Places

Seeding, breeding, garden, bonsai, flower planting, tissue culture, foliage plants, plant result, hydroponic vegetables, green house planting, large factory planting .

LED Linear Light

www.lowcled.com



Features:

- Model: LL-GLF01-300W
- Power: 300W
- Input Voltage:100-240VAC 50/60Hz
- Frequency: 50/60Hz
- Chipset: Epistar / San'an
- Driver: MEANWELL with UL listed
- Material: Die-casting aluminum + high light transmission lens
- Housing Color:aluminum color
- Full spectrum of Ratio (Main wavelengths):
620-630nm/ 650-670nm/730-750nm/390-410nm/430-450nm/460-470nm
- Par Value (PPFD):(umol/m2/s):
439umol@0.5M, 169umol@1.0M, 91umol@1.5M, 51.2umol@2.0M
- Lighting Coverage::0.5M@1.9m², 1.0M@3.9m², 1.5M@5.6m², 2M@7.7m²
- Luminous Efficacy:50-60 lm/w
- CRI: >70
- Beam Angle: 30°/ 60°/ 90°
- IP Level: IP65
- Operating Temperature: -25~40℃
- Lifespan: 50,000h
- Product size: 337*427*82mm
- Packing size: 61*41*20cm (1PCS/Carton)
- Warranty: 2years



LL-GLF01-60W



LL-GLF02-120W



LL-GLF03-180W



LL-GLF04-240W

Model NO.	Power	Chip	Input voltage	Beam Angle	Color	IP	Driver
LL-GLF01-60W	60W	SMD3030(90PCS)	100-240VAC	60°/90°/120°	Red : 620-630nm Blue : 455-460	Ip67	Meanwell
LL-GLF02-120W	120W	SMD3030(180PCS)	100-240VAC	60°/90°/120°	Red : 620-630nm Blue : 455-460	Ip67	Meanwell
LL-GLF03-180W	180W	SMD3030(270PCS)	100-240VAC	60°/90°/120°	Red : 620-630nm Blue : 455-460	Ip67	Meanwell
LL-GLF04-240W	240W	SMD3030(360PCS)	100-240VAC	60°/90°/120°	Red : 620-630nm Blue : 455-460	Ip67	Meanwell
LL-GLF05-300W	300W	SMD3030(450PCS)	100-240VAC	60°/90°/120°	Red : 620-630nm Blue : 455-460	Ip67	Meanwell



LOWCLED LIGHTING CO., LTD

ADD: Building 2, XiGeLiWan Park, Xixiang Town,
Bao'an District, Shenzhen, Guangdong, China

TEL: +86 755 29608065

FAX: +86 755 27399769

E-mail: sales@lowcled.com

Website: www.lowcled.com